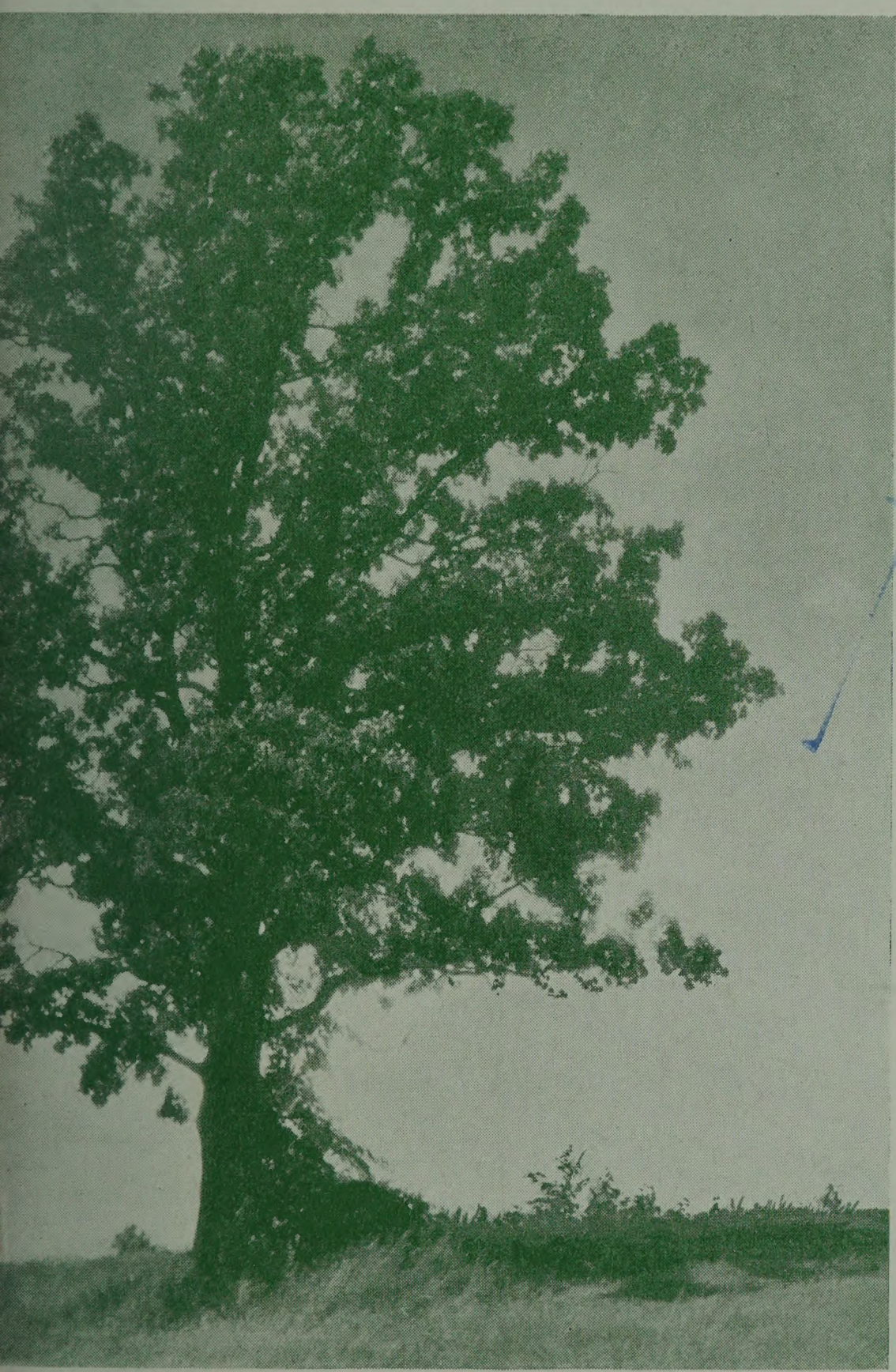


Historic, archived document

Do not assume content reflects current scientific knowledge, policies, or practices.

62.43

BUT ONLY GOD CAN MAKE A TREE



LIBRARY
RECEIVED
☆ APR 27 1940 ☆
U. S. Department of Agriculture.

SPRING CATALOGUE

1940

CUTTING'S NURSERY

BYRON

TELEPHONE
3 1 2 3

MINNESOTA

For Forty Years!

We have been supplying plants and shrubs to the planters of this community.

1900

Apr 23 C. Houch
 55 Bederwood
 12 Marlboro
 " 24 F. C. Whitcomb
 3 White Grape 3 d. B. Holland
 " 26 Geo. Hicks
 100 Bederwood 200 Warfield
 " 27 C. F. Hesson
 125 Warfield 50 Bederwood
 " 28 Harley Cummings
 100 Enhance 100 Bederwood
 40 Nemcha 40 Palmer
 20 Marlboro 20 Loudon

1904

S. L. Swain Rochester
 2 Wolf Plum
 2 Hyant "
 12 Alder Raspberry
 H. A. Eckholdt
 40 Arba Vitae apt
 1 Duch. Hec. 1 Sir. 1 Whiting
 E. A. Knowlton
 1 Gen. Jacque 1 Paul Heyron
 Mrs Geo. Durand
 1 Queen of Prairie 1 Paul Heyron 1 Crim. Rambler
 1 Clem. Jacksonian

1905

May 4 C. A. Roberts
 100 Gen. Durand
 12 Alder
 1 Paronia Madeline
 " 4 Dr. Adams
 2 Clem. Paniculata
 " 4 Geo. J. Allen
 35 Arba Vitae
 " 4 A. Gooding
 2 Crim. Rambler
 1 Prairie App

C. H. Ainslie
 40
 Geo Doty
 100 Asparagus 2 Hydrangea
 A. A. Hemmich
 100 Asparagus
 Clara Everstine
 May 18 B. H. Eaton
 4 Borden 2 Brighton
 2 Paul Heyron "
 2 Gen. Jacque "
 May 17 Bert W. Perkins. Chester Misses
 100 Boder. 100 Gen. A. 100 Warf. 100 Hec.
 100 Brandywine

At first a few berry bushes and a rose bush or two supplied the needs of the farm or home, but people have gradually learned the value of a generous planting of trees and shrubs about the home, and they realize the truth of the slogan "It's Not a Home Until It's Planted."



There are Three Methods of Selling Nursery Stock

TRAVELLING SALESMEN—Some nurseries use this method, the best salesman being one who is a persistent talker and not easily "turned down," and it helps if he knows something about trees and shrubs or at least is able to make people think he does. Such nurseries have to charge about twice the price asked by nurseries not employing salesmen.

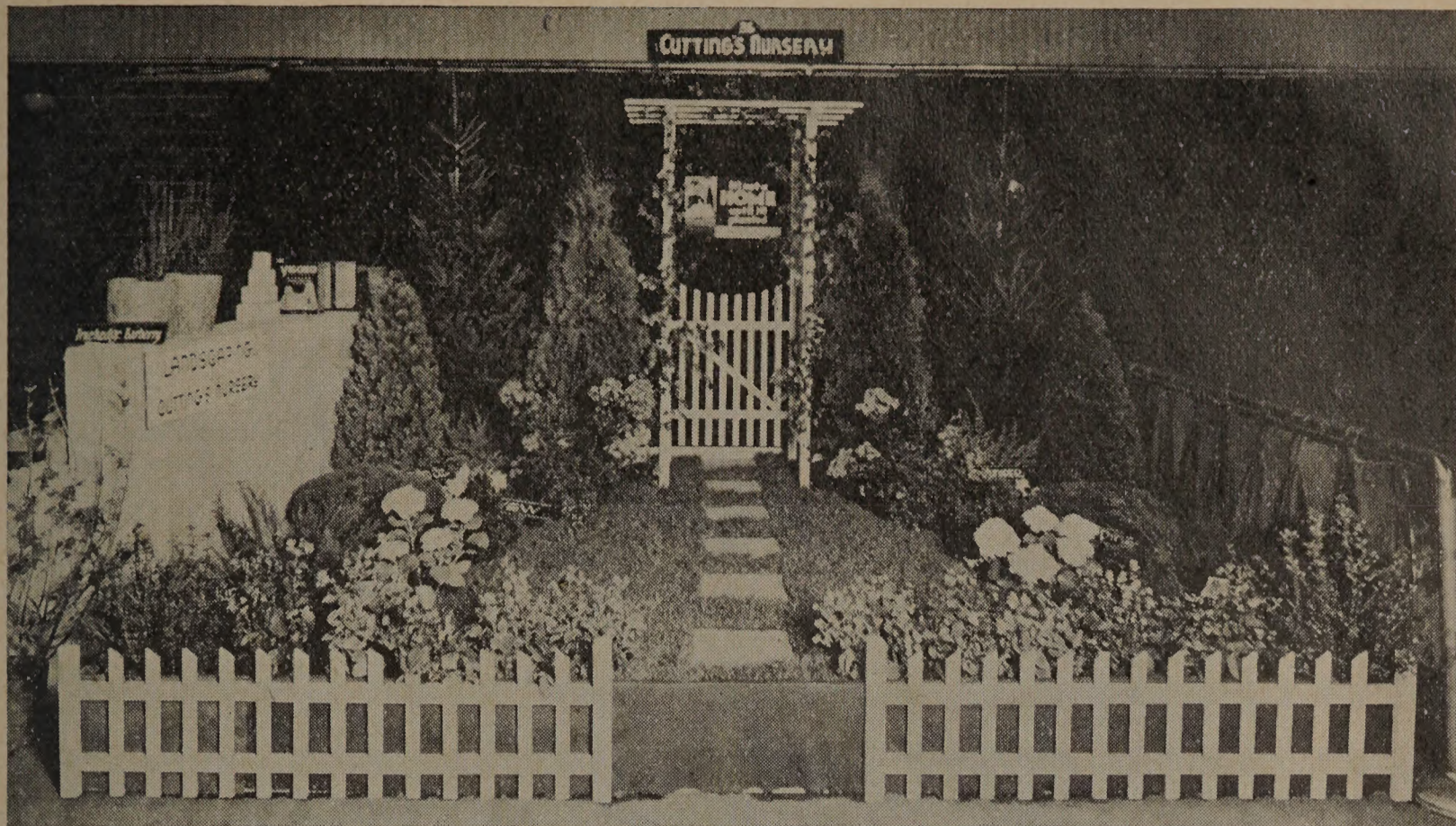
MAIL ORDER CATALOGS—Goods can be sold much cheaper by this method but most people are not familiar with the trade names of the various grades and are usually disappointed with the small size of the plants they receive.

Under the above systems you pay your money and take what they send you.

"CASH AND CARRY"—When you buy by this method you go to the nursery when you are ready to plant, look at the various grades and decide what you want, then pay for it and take it home. In this way you get more for your money and are satisfied with what you get.

Whether you buy through our "cash and carry" system or make use of our complete landscape system, you do not pay for anything until you see it and find it to be satisfactory.

Please do not expect digging done on Sunday.



Our exhibit at the 1939 Home Show. See our exhibit at the Home Show in Rochester, March 28, 29 and 30, 1940.

How to Take Advantage of the Services Offered by Cutting's Nursery

CASH AND CARRY—Look through this catalog and decide what trees or shrubs you want; then when you are ready to plant, drive to the nursery and select the varieties and grades that suit you. If you need any information our experienced salesmen will be glad to assist you.

If you have never been here before you will be surprised at the large assortment of trees, shrubs, evergreens, peren-

nial plants and garden plants you will find here.

If you have been buying from traveling salesmen you will find that you will get as good, or better, stock here, and stock that you pay a salesman \$10.00 for will cost from \$5 to \$7 here.

We make frequent deliveries to nearby towns—every day to Rochester—and can usually arrange to deliver any order that you cannot carry with you.

LANDSCAPE SERVICE

If you have built or bought a new home and the grounds surrounding the house have not been developed, then you should make plans now so you can start work on that part of the home as soon as spring arrives. Whether you are going to plant only a few shrubs, or want the whole lot nicely landscaped it will be to your advantage to secure the services of an experienced landscape man in planning what and where to plant. There are so many factors to be considered—such as, the size and shape attained by different varieties, whether they will stand shearing, how far apart to plant them, whether they will stand much heat or drought, their habits of bloom, and selecting just the right thing for a certain place—that lack of experience can cause many mistakes.

We do not use any “high-powered salesmanship” in advising our prospective customers. We give you practical advice about what to plant; then it is your privilege to decide if you want to give us your order. And we never ask a customer to sign an order or to pay cash in advance!

We are equipped to furnish a complete landscape job for those desiring it, including grading, lawn making, black dirt, sodding, fertilizing, grass seed and planting.

So if you need assistance with your planting problems, just let us know and we will be glad to help you.

And it will be to our mutual advantage if you call us now and not wait until the planting season opens when everything has to be done at once.

Flowering Shrubs

FLOWERING ALMOND

A very beautiful and graceful shrub of medium height. It is covered with very double pink flowers in early spring before other shrubs have budded and is exceedingly attractive. 2-3 ft. **50c** each.

BUDDLEIA (Butterfly Bush)

Charming — A glorious shrub, bearing throughout the late summer and autumn elegant long sprays with lavender-pink blooms. **40c** each.

BARBERRY

Thunberggi — A round, bushy, graceful plant. Bright green in summer, the leaves becoming brilliant red in fall, with a handsome covering of scarlet berries that last into the winter. Very attractive when used as a specimen plant or as an edging plant for borders, foundations or hedging. See other prices under "Hedges." Select plants, 12-18 inch, **25c**; 18-24 inch, **35c**; 2-3 ft., **50c**.

Red-leaved — Has rich, bright red foliage in spring that remains so during the summer if in full sun. Is unusually beautiful in fall with the red berries, and bronze and yellow of the foliage. A splendid foreground shrub, beautiful in hedges. 12-18 inch, **35c** each, 10 for **\$2.50**; 18-24 inch, **50c**.

Truehedge (Plant Patent 110) — A new form of the Barberry, perfectly upright and pyramidal with very dense growth and heavy foliage evenly distributed from the ground up; berries very similar to Thunbergs Barbery. Can be grown like boxwood into a symmetrical specimen. Very desirable for compact hedges. 18-24 inch, **45c** each; 10 for **\$3.30**; 2-3 ft. **55c**; 10 for **\$4.50**.

CARAGANA

Siberian Pea Tree — Extremely hardy. Blossoms are pea like and yellow in color, coming forth in small clusters in late spring. Fine for border or group planting. Does well in shade. 2-3 ft., **25c**; 3-4 ft., **35c**.

Pygmy — A new dwarf shrub, ideal for a low hedge because it requires little pruning and naturally maintains a dwarf compact shape. If not sheared it attains a height of three feet. The foliage is fine and dense. In spring the hundreds of small golden yellow flowers add much to the interest. 12-15 inch, **30c** each; **\$3.00** per 12.

BUFFALO BERRY

An attractive silvery shrub, bearing masses of brilliant red berries in late summer and fall. A handsome ornamental up to 12 feet tall. 3-4 ft., **50c**.

CORALBERRY

A low, slender branching shrub valuable for planting in shady places and for covering steep slopes. Its beauty lies in the masses of coral berries that ripen in the fall and usually adhere all winter. 2-3 ft., **35c** each; **\$3.00** per 12.

CRABS

Hopa — One of the most beautiful of Prof. N. E. Hansen's productions. In spring the tree is a mass of dark red flowers, in fall covered with dark red fruits, which make a delicious jelly. 4-5 ft., **80c**; 5-6 ft., **\$1.00**.

Red Silver—A very attractive lawn tree with maroon-red leaves overlaid with silver on the under side. Has dark red blooms followed by dark red fruit which hangs on until winter. 3-4 ft., **75c**; 4-5 ft., **\$1.00** each.

CISTENA

Purple Leaved Sandcherry — Grows 3 to 4 ft. high, spreading about the same. Foliage of a rich dark red which makes a valuable contrast in shrub plantings. 2-3 ft. **35c**; 3-4 ft. **50c**.

CURRANT

Alpine — One of the best shrubs for very shady locations. A dwarf shrub of dense growth with fine dark green leaves. Unexcelled for a low hedge; 12-18 inch, **30c**; 18-24 inch, **40c**; 2-3 ft., **50c**. For quantity prices see "Hedges."



We used this picture, taken in a Minneapolis Park, because it illustrates so many of the principles of landscape art. Note the charm of the skyline produced by the poplars, cedars and the grove in the distance—the range of types of trees in the foreground—how the beauty of the scene is enhanced by the stretches of still water—the bay of shrubs at the left extending out into the lawn—the wide sweep of lawn—the natural massing of trees in the distance and the skillful arrangement of the trees and evergreens in the foreground, producing a delightful blending of Nature and Art. And the touch of “life” furnished by the stone wall along the drive at the left.

DOGWOOD

Siberian Red Twigged — Good for border plantings where the smooth slender bright red branches make a pleasing contrast with snow and evergreens. Small white blooms early in summer, succeeded by a fall crop of ornamental berries. 3-4 ft., **35c**; 4-5 ft. **50c**.

ELDER

Golden Leaf — Bright golden yellow foliage throughout the summer. The large white flower heads appear in July, followed by black berries on which birds like to feed. 3-4 ft., **40c**.

Cut Leaf — The leaves of this variety are fern-like in formation and the shrub is especially effective in masses. 3-4 ft., **40c**.

HONEYSUCKLE

Tatarian Pink—Strong upright growing shrubs which thrive under any conditions. Produces an abundance of pink flowers in May, followed by red berries in the fall. Its greyish-white bark is attractive at all times. One of the best

shrubs for tall screens or border plantings.

	Each	12	100
2-3 ft. -----	\$.30	\$3.00	\$20.00
3-4 ft. -----	.50	5.00	40.00
4-5 ft. -----	.60	6.00	----

Morrow's — A medium sized honeysuckle, wide spread branches. Flowers white, changing to yellow. Red berries which are retained until fall. 3-4 ft., **50c**.

HYDRANGEA

Hills of Snow — Heavy snowball-like flowers of white from late June to frost. Will stand partial shade. Does best if cut back to the ground every spring. 18-24 inch, **35c**; 2-3 ft., **50c**.

Paniculata Grandiflora — One of the most conspicuous shrubs in any collection in August and September. The conical flower heads of creamy white later change to pink. Stands full sun but also does well on the north side of the house. Needs plenty of water. **50c**.

We Recommend VIGORO, the Complete Plant Food, to All Home Gardeners!

LILAC

Persian — Fine leaved, fine twigged variety. Does not sucker like common lilacs. Great masses of delicate purple blooms. 2-3 ft., **30c**; 3-4 ft., **50c**; 4-5 ft., **75c**.

Common Purple — Is perfectly hardy, makes a dense growth, flowers fragrant. Often used for hedges and screens. 3-4 ft., **30c** each, **\$2.50** per 12.

French—Unsurpassed for fragrance and beauty, they are among the most hardy of ornamental plants and can be depended upon to grow under a wide range of climatic conditions. 2-3 ft., **\$1.00** each; 3-4 ft., **\$1.50**; 4-5 ft., **\$2.00**.

NINEBARK

Dwarf — One of the newer shrubs and is very desirable as a low massing shrub and makes a hardy dense hedge of low to medium height. 12-18 inch, **25c** each; **\$2.50** per 12; 18-24 inch, **40c**; **\$4.00** per 12.

OLIVE

Russian — 10-12 ft. Its foliage is of a remarkable silver hue, showing up in striking contrast to the green of other shrubs and trees. Has fragrant yellow flowers. Very hardy. 2-3 ft., **25c** each; **\$2.00** for 12; 4-5 ft., **50c** each.

POTENTILLA

Cinquefoil — Blooms all summer and, being of a dwarf habit, is suitable for

outside border plantings. Flowers are bright yellow. 18-24 inch, **35c**.

PLUM

Newport — The best red leaved tree for the north. A very desirable shrub or small tree to use where red foliage effect is desired. The red color is held throughout the season. 4-5 ft., **75c**; 5-6 ft., **\$1.00**.

SPIREA

Anthony Waterer — Brilliant rosy carmine flowers. Blooms all summer. Always blooms the first season. Is very useful for planting in front of larger shrubs. Grows 2 ft. high. 12-18 inch, **25c**; 18-24 inch, **40c**.

Arguta, Snow Garland — The earliest spirea to bloom, the bush becoming a mass of snowy garlands before the leaves appear. Grows 4 to 5 ft. high. 2-3 ft., **40c** each; 3-4 ft., **50c**.

Frobelli — 2-3 ft. A low bushy shrub of the Anthony Waterer type but more sturdy in habit. Canes distinctly reddish; young foliage tinged red. Flowers rose color. Brilliantly colored in autumn. 12-18 inch, **25c**; 18-24 inch, **35c**; 2-3 ft., **50c**.

Thunbergi — 3-4 ft. Slender, arching branches, and fine, feathery, light green foliage. White bloom in early spring. One of the most graceful of the small shrubs. 2-3 ft., **25c**; 3-4 ft., **40c**.

FLOWERING PLUM

(*Prunus Triloba*) — A showy and interesting shrub, bearing in the spring, on its long slender branches a wealth of large pink double flowers. One of the finest spring blooming shrubs. Useful in the border or as a lawn specimen. Grows 5 feet high. 3-4 ft., **50c**; 4-5 ft., **75c**.



Korean — Similar to Bridal Wreath but blooms a week later. A graceful shrub, useful in shrub borders and massing. 12-18 inch, **20c**; 3-4 ft., **50c**.

SYRINGA OR MOCK ORANGE

Lemoine — A dwarf variety, showy and free blooming with slender branches. Flowers creamy white and very fragrant. 2-3 ft., **35c**; 3-4 ft., **50c**.

Van Houttei (Bridal Wreath) — A very hardy and effective shrub, with grace-

ful arching branches well covered in late May with a profusion of large pure white flower clusters. The most popular and most planted of all shrubs. Will grow in almost any location. Grows 5 to 6 ft. high.

	Each	12	100
18-24 inch—2 year	\$.20	\$1.50	\$10.00
2-3 ft.—3 year	.25	2.50	18.00
3-4 ft.—3 or 4 year	.35	3.50	25.00
Large landscape size	.50	5.00	---



VIRGINAL SYRINGA

Finest of all the Syringas

Semi-double. White. Everblooming. Everything considered this is the most sensational of all the Philadelphus. In fact, we regard it as the most valuable new shrub acquisition to the flower garden of recent years. The bush is a moderately strong grower, with us attaining a height of 6 to 7 feet. Rather open, sparse foliage to make the wonderful blooms all the more conspicuous. Flowers pure white, semi-double, often 2 inches in diameter. Begins to bloom about June 15th with us, and blooms profusely for about 3 weeks. Then it rests a few weeks and starts to bloom again, continuing with a small amount of bloom until frost. 2-3 ft., **40c**; 3-4 ft., **50c**; 4-5 ft., **75c**.

Grandiflora — This is the old-fashioned syringa or Mock Orange. It is the hardiest and grows into the largest bush of all the Mock Oranges. Grows to 12 feet high. Covered with great white blooms. 3-4 ft., **40c**; 4-5 ft., **60c**.

VIBURNUM

Arrowwood — 8-10 ft. An attractive shrub with peculiar dentate leaves, bright green foliage turning to rich purple and red in the fall. White flowers followed by small blue-black berries that are relished by the birds. Does well in shade. 3-4 ft., **50c** each.

Common Snowball — Handsome white flowers are produced in great globular clusters. Has long been one of the most popular and showy varieties on our lists. 18-24 inch, **30c**; 3-4 ft., **50c**.

Wayfaring Tree — An attractive tall growing shrub. Produces white flowers in June and July, followed by red berries which later change to black. Suitable for heavy screen planting or in large shrub masses. 2-3 ft., **30c**; 3-4 ft., **40c**.

High-Bush Cranberry—One of the best shrubs for ornamental planting. Extremely hardy. The white flowers of early summer are followed by brilliant red, edible berries that resemble cranberries. Leaves are large, with a vivid fall coloration. 3-4 ft., **40c**.

TAMARIX

Hispidia — 6-7 feet. A beautiful shrub with lace-like foliage. Bluish-gray with large clusters of pink flowers. An excellent shrub that is becoming very popular. 3-4 ft., **40c**.

WAHOO

Alatus (Winged Burning Bush) — One of the most brilliant plants in the landscape in the Fall, with its bright red leaves and berries. Branches winged with a corky layer. Fine specimen shrub or for massed planting. 18-24 inch, **35c**; 2-3 ft., **50c**.

Europaes (European Spindle Tree) — Bright yellow flowers in Spring, followed by clusters of brilliant red berries, which hang till mid-Winter. Leaves turn to beautiful crimson-scarlet in the Fall. 5-6 ft., **75c each**.

HARDY BUSH ROSES

Harrison's Yellow — Is perhaps the best known and most common June bloomer. 5 to 6 ft. tall, it is a perfect mass of bright yellow, double roses, 1 to 2 inches across, for several weeks in mid-June.

Belle Poitevine — Is a sturdy, strong growing pink rugosa hybrid perpetual, bearing large bright pink, very double flowers.

Blanc Double de Coubert — The best white Rugosa. Flowers double in form and appear in clusters. Fragrant. Attractive dark green foliage and long season of bloom.

F. J. Grootendorst—A new hybrid with true Rugosa foliage and bright crimson

lacinated flowers. Blooms almost continually. Compact, bushy growth.

Hansa — A large, double, deep red Rose of pleasing fragrance. Foliage rich dark green. Bush is very hardy and is a splendid ornamental shrub.

Rubrifolia—Quite unique and conspicuous for its high-colored, reddish purple leaves. Deep pink flowers; scarlet fruits.

Hugonis — The long, arching branches are closely set with lovely single flowers very early in the season, sometimes before June 1st in this latitude. The blooms are approximately 1½ inches across and of clear bright yellow which does not fade to white. Strong 2 year bushes of above varieties, **50c each**, 6 for **\$2.50**; heavy 3-4 ft., **75c**.

CLIMBING ROSES

Crimson Rambler and Paul's Scarlet Climber — 2 year, **40c each**.

FLORIBUNDA ROSES

The Floribunda group of roses represents varieties especially bred for hardiness, sturdiness, ease of culture, and mass color effects. The habit of growth is of medium height, they are very winter hardy, therefore, permanent, disease resistant, bloom continuously in large clusters and do not fade unpleasantly in hot summer suns.

Else Poulsen — Flowers medium size, semi-double, lasting bright rose pink. **50c**.

Karen Poulsen — (D. T. Poulsen 1933). Bud medium size. Globular. Flowers single. Four inch. Brilliant scarlet. Continuous bloomer, June to November — **60c**.

Special Free Landscape Service

If you have a new home to be planted or plan to modernize your old planting and need some assistance with your planning, we can usually arrange to have one of our men call on you and help you with advice and suggestions. Or, if necessary, we will make a complete landscape plan for your place.

This service is free and places you under no obligation.

BUT PLEASE BE PROMPT about asking us to help you as we are too busy after the planting season opens to furnish much of this service.

VIGORO IS IDEAL FOR LAWNS, FLOWERS, SHRUBS, TREES, VEGETABLES!

Hardy Deciduous Hedges

There is nothing quite so effective for the boundaries of a lawn or property division as a hedge. It does not decay, nor does it require paint, but grows more beautiful, more effective, and consequently more valuable, year after year. A good hedge is an asset to any piece of property. The first cost of installing a hedge is its only cost, so that, from an economical standpoint, it is less expensive than a fence. Dense, impenetrable hedges may be had if Japanese Barberry, Buckthorn or Alpine Currant is used.

ALPINE CURRANT

Absolutely hardy, free from disease and insect pests, bright green foliage which remains on the plants until late in fall. Grows very bushy and is best variety for ornamental hedge from one to three feet in height. Plant fifteen inches apart.

	10	100
12-18 inch -----	\$3.00	\$25.00
18-24 inch -----	3.50	30.00
2-3 ft. -----	4.00	35.00

BUCKTHORN

This not only makes a very ornamental hedge but is the best variety for protection as the branches are stiff and makes a stout hedge of any height from two to ten feet. Our plants have been transplanted and twice cut back, making them much superior to the seedling plants sold by some nurseries at a lower price. Plant 12 inches apart.

	10	100
18-24 inch trans -----	\$1.50	\$12.00
2-3 ft. trans -----	2.00	16.00
3-4 ft. trans -----	2.25	18.00

HONEYSUCKLE

Tatarian Pink — Sometimes used as a sheared hedge, 4 to 6 feet high, but is unexcelled for a tall screen or border, growing 10 to 15 feet high, 2-3 ft. **\$3.00** per 12; **\$20.00** per 100.

JAPANESE BARBERRY

A graceful shrub becoming very beautiful in fall with its yellow and red leaves and red berries. Its dense growth and sharp briars make it a good hedge plant for protection from trespassers. Plant 12 or 18 inches apart.

	10	100
12-15 inch seedlings --	\$.75	\$ 6.00
12-18 transplants -----	1.50	12.00
18-24 transplants -----	2.50	20.00

SPIREA VAN HOUTTI

Often used as a sheared hedge but is especially adapted for use as a screen or snowbreak, planting them from 2 to 4 feet apart and allowing them to grow to their natural height of six or seven feet. 18-24 inch, **\$1.50 per 12;** **\$10.00 per 100;** 2-3 ft., **\$2.50 per 12;** **\$18.00 per 100.**

Replace Agreement

Any evergreens that do not live through the first summer will be replaced at one-half price. All other trees, shrubs or perennial plants that do not live through the first summer will be replaced free of charge.

Rochester Office

From February 15th to the end of the planting season we will have an office with Knutsen and Brunet, architects, at 228½ S. Broadway. Phone 2176.

Trees for Street and Lawn

GREEN ASH

The hardiest of all the native trees. Useful for parks and streets, or for lawn planting. Shapely and handsome. 5-6 ft., **50c**; 6-8 ft., **75c**; 8-10 ft., **\$1.00**; 10-12 ft., **\$2.00**.

BIRCH

Weeping Cutleaf — One of the most beautiful trees for the lawn, with delicately cut foliage. The bark is silvery white, forming a beautiful contrast with the foliage. 6-8 ft. trees, **\$3.00**; 8-10 ft., **\$4.00**.

WHITE BIRCH

A beautiful, graceful, upright tree with white bark which makes a pleasing contrast with the dark trunks of other trees. Very effective in clumps near evergreens. 5-6 ft., **\$1.00**; 6-8 ft., **\$1.50**.

LAKE CITY ELM

The original specimen of this variety was found growing in Lake City, Minnesota. It is a type of American Elm of unusual merit. Close, upright growth, insuring it against breaking down from sleet and storm and makes trimming unnecessary. Trees are all symmetrical and uniform in shape, yet with sufficient spread to make it a valuable shade tree. It is especially adapted for boulevard planting as it does not have low spreading branches to interfere with travel on the sidewalk and pavement. 8-10 ft. trees, **\$1.50**; 10-12 ft., **\$2.00**; 2 to 2½ inch, **\$3.00** each.

AMERICAN ELM

A native tree of unusual vigor and hardiness. Contrary to belief, it is the most rapid growing of any of the more desirable long-lived trees. The arching branches form wide coverings over streets and drives; on the lawn its abundant shade and dark green leaves make it most desirable. 6-8 ft., **75c** each; 8-10 ft., **\$1.00**; 1½ to 2 inch, **\$2.00**; 2½ to 3 inch, **\$3.00** each.

CHINESE ELM

We have the following grades of Chinese Elm and believe they are worthy of being planted as a temporary tree, on account of their rapidity of growth and beauty of foliage and form.

Transplanted

trees	Each	5	10
5- 6 ft. -----	\$.50	\$2.25	\$4.00
6- 8 ft. -----	.75	3.00	5.50
8-10 ft. -----	1.00	4.00	7.50
10-12 ft. -----	1.25	5.00	9.00

HACKBERRY

A hardy native tree somewhat resembling the elm in appearance. The branches spread horizontally and form a wide crown that makes it a splendid shade tree. Thrives well in most any soil. 6-8 ft., **\$1.50**; 8-10 ft., **\$2.00**.

HONEY LOCUST

A beautiful tall tree with feathery foliage and fragrant flowers. Dark brown bark. 6-8 ft., **\$1.00** each. Seedlings of the thornless variety, 18-24 inch, **\$3.00** per 100.

SOFT MAPLE

A rapid growing tree that is much used for quick effect. 5-6 ft., **50c**; 6-8 ft., **75c**; 8-10 ft., **\$1.00**.

SUGAR MAPLE

This Hard Maple is one of the most symmetrical and well-rounded trees native to America. Has dense foliage of rich green changing to yellow and scarlet in autumn. 6-8 ft., **\$1.50** each; 8-10 ft., **\$2.00**.

SCHWEDLER MAPLE

Brilliant purplish red leaves in spring make a rich contrast with the green of other trees; gradually the highly colored leaves soften to bronze, then later to waxy green. A magnificent lawn tree. 6-8 ft., **\$2.50**; 8-10 ft., **\$4.00**.

MOUNTAIN ASH

A beautiful tree with white flowers in May followed by orange-red berries in fall. 5-6 ft., \$1.75 each; 6-8 ft., \$2.00 each; 8-10 ft., \$3.00.

NORWAY POPLAR

Unexcelled for quick growth and effect. Has a heavy dense foliage and resembles the cottonwood in shape. This will make a large tree the quickest of any tree you can plant. 6-8 ft., 50c each; 8-10 ft., 80c.

BOLLEANA POPLAR

This splendid upright silver poplar resembles the Lombardy in growth. A tree of lofty habits, suitable for tall

screening and architectural emphasis. 5-6 ft., 75c; 6-8 ft., \$1.00; 8-10 ft., \$1.50.

LOMBARDY POPLAR

A very slender tree, growing to a great height. Used very effectively in landscape planting where some point is to be accented, or to screen some undesirable view. 5-6 ft., 50c each; \$5.00 per 12; 6-8 ft., 75c each, \$7.00 per 12; 8-10 ft., \$1.00 each, \$10.00 per 12; 10-12 ft., \$1.50 each.

NIOBE WEEPING WILLOW

A golden barked willow of decided weeping habit. A good grower with long, pendulous branches. 5-6 ft., 75c; 6-8 ft., \$1.00; 8-10 ft., \$1.50.

Mail Orders

If not convenient for you to come to the nursery we will be glad to receive your mail orders. Strawberries, raspberries and perennials will be sent by parcel post, prepaid, at prices quoted. Other stock will be sent by freight or express, purchaser to pay charges. Large orders will be delivered by truck at our expense. Nursery is located on paved highway, U. S. 14, eight miles west of Rochester.

Windbreak Stock

NORWAY SPRUCE

The most popular evergreen for windbreaks. Plant 10 to 12 feet apart in the row, with rows 16 feet apart.

	10	100
8-12 inch -----	\$1.25	\$10.00
12-18 inch -----	2.00	15.00
18-24 inch -----	2.50	22.00
2- 3 ft. -----	4.00	30.00
3- 4 ft. -----	5.00	42.00

BLACK HILLS SPRUCE

	10	100
18-24 inch -----	\$4.00	\$35.00
2- 3 ft. -----	5.50	50.00
25 or more at hundred rate		

American Elm seedlings, 2-3 ft.---	\$2.50
American Elm seedlings, 3-4 ft.---	3.50
American Elm seedlings, 4-5 ft.---	5.00
Norway Poplar, 3-4 ft.-----	6.00
Golden Willow, 3-4 ft.-----	4.00
Golden Willow, 4-6 ft.-----	6.00
Honey Locust, 2-3 ft.-----	2.50

Chinese or Siberian Elm—This drought resisting, rapid-growing tree, with its habit of producing many tough branches close to the ground, is especially adapted for windbreaks. Plant about three feet apart, with rows 8 or 10 feet apart.

100	500
Seedlings, 18-24 inch ----	\$1.50 \$6.00
Seedlings, 2-3 ft. -----	2.00 8.00

If you need any other kind or grade of windbreak or farm woodlot trees we can furnish it at as low a price as any nursery. Send us your list for quotations.

OUR GUARANTEE

We guarantee to all our customers stock that is true-to-name and absolutely as represented. Any of our stock proven not to be, will be replaced free of charge or the purchase price refunded. It is mutually agreed by the purchaser and ourselves that we are not to be held liable for any damage other than herein named.

For permanent, year-round beauty, plant evergreens.



We planted these evergreens ten and fifteen years ago.



Evergreens

Evergreens serve many uses in beautifying home grounds. Where it is desirable to have a screen or bank of foliage to insure privacy or for other reasons, evergreens serve the purpose at all seasons.

Prices Include Digging Evergreens With Ball and Burlap

PYRAMIDAL ARBOR VITAE

This variety is perfectly pyramidal in shape, spreading very little at the base and retaining the shape without shearing. The color is rich deep green. Useful for entrance and corner plantings. 18-24 inch, **\$2.00**; 3-4 ft., **4.50**; 4-5 ft., **\$5.50**; 5-6 ft., **\$7.00**; 6-7 ft., **\$9.00**.

SIBERIAN ARBOR VITAE

Grows very compact and forms a broad, dense, bushy tree. Stands shearing well. 18-24 inch, **\$1.50**; 2-3 ft., **\$2.50**.

CONCOLOR FIR

This silver fir is one of the most beautiful of all evergreens for specimen planting. Color ranges from light green to blue. 3-4 ft., **\$4.00** each; 4-5 ft., **\$5.00**.

RED CEDAR

This tree is valuable for group plantings as well as for specimen trees. One of the hardiest varieties and stands shearing well. 2-3 ft., **\$3.00**; 3-4 ft., **\$4.00**.

PFITZER'S JUNIPER

This is the most popular of all the spreading types. Its habit of growth, its pendulous branches and attractive foliage are strikingly beautiful. It lays close to the ground and for edging larger plantings there is nothing superior. The foliage is a grey-green both winter and summer. It stands severe pruning in case it outgrows its location. 12-18 inch, **\$1.50**; 18-24 inch, **\$2.50**; 2-3 ft., **\$3.50**.

SAVIN'S JUNIPER

Spreading fan shape habit of pleasing color of dark green. Useful for foundation plantings or at base of evergreen groups. 12-18 inch, **\$1.50**; 18-24 inch, **\$2.50**; 2-3 ft., **\$3.50**.

ANDORRA JUNIPER

A very fine dwarf prostate juniper. Especially attractive in fall when the needles turn a purple bronze color. 18-24 inch, **\$1.50**; 2-3 ft., **\$2.00**.

MEYER'S JUNIPER

Dwarf, irregular upright, shining blue in various shades. Splendid in rockeries or in masses of dwarf evergreens. 18-24 inch, **\$2.00.**

MUGHO PINE

Of low, dense spreading growth, with very dark green foliage. Very hardy. Ideal as dwarf, specimen plants. 12-18 inch, **\$1.50**; 18-24 inch, **\$3.00**; 2-3 ft., **\$4.00.**

DWARF JAPANESE YEW

A hardy, dwarf, slow-growing evergreen. Foliage is very heavy and of a waxy, shiny green color. Will thrive in dense shade. 12-18 inch, **\$1.50.**

SILVER RED CEDAR

One of the popular, upright Junipers, having the graceful manner of the Red Cedar, and the added charm of blue-tipped foliage. A little pruning induces a compact, formal shape, while some planters prefer the open growth and more irregular outline of the untrimmed tree. 3-4 ft., **\$5.00.**

BLACK HILLS SPRUCE

The hardiest of all spruces, symmetrical, compact and bushy of growth. The foliage varies from a green to a bluish tint and all trees are remarkable for their bright, fresh color. Select specimens.

12-18 inch	---- \$.75	3-4 ft.	---- \$2.50
18-24 inch	---- 1.00	4-5 ft.	---- 4.00
2- 3 ft.	----- 1.75	5-6 ft.	---- 5.00



COLORADO BLUE SPRUCE

This is the most popular evergreen for specimen planting. Color of foliage ranges from green to a silver blue. **Prices of Selected Blue Spruce Shiners** 2-3 ft., **\$5.00** each; 5-6 ft., **\$10.00** each.

COLORADO GREEN SPRUCE

Just as symmetrical and beautiful as the Blue Spruce except that the color is green. 18-24 inch, **\$1.25**; 2-3 ft., **\$2.00**; 3-4 ft., **\$3.00.**

NORWAY SPRUCE

The most generally used of evergreen trees. Useful for screens and windbreaks on account of its rapid growth. A tall tree of pyramidal, symmetrical growth. Selected trees, 18-24 inch, **60c**; 2-3 ft., **\$1.00**; 3-4 ft., **\$1.50.** See under "Windbreak Stock" for other prices

DWARF ALBERTA SPRUCE

One of the most interesting oddities among evergreens. It is of extremely narrow, pyramidal growth, thickly covered with short, close set twiggy branches. It is unlike any other evergreen, both in shape and general appearance so that it always attracts attention. 12-15 inch trees, 10 to 12 years old, **\$2.00** each.



PFITZER JUNIPER

Hardy Perennials

Prices of perennials, except as noted: 25c each; 12 for \$2.50.

Strong, field-grown plants that will bloom the first year.

We are growing all the leading varieties of perennials but only had space to list a few kinds.

FALL BLOOMING ASTERS

Plant these brilliant fall-blooming hardy Asters and prolong your blooming season a full month. Have your garden a place of dazzling splendor when all about is brown and sere. They will bring a world of color during late September, all of October, and on into November until heavy freezing kills the flowers. These plants stand our Minnesota winters unprotected.

Mount Everest — The finest and best white aster. It forms very tall, well-shaped pointed pyramids with an abundance of lateral growths, which flower right down to the ground. Makes wonderful bouquets as cut flowers.

Blue Gem—Large lovely flowers of blue with a yellow center, best blue in cultivation. September until frost. 3 to 4 feet.

Charles Wilson — A brilliant red which is becoming very popular throughout the country. 3 feet high.

NEW DWARF ASTERS

Countess of Dudley—Lovely blooms of luminous pink, with bright yellow eye. Unusually free flowering, bushy habit. Late September. 9 in.

Lilac Time — Deep violet-blue flowers are produced on well rounded bushy plants growing to a height of 15 inches. It is a most colorful and outstanding variety. September.

Victor — The dwarfiest of all and exceedingly pretty. Flowers are large and of a beautiful clear lavender-blue. An especially fine rock plant.

Hardy Perennial PHLOX

Starting to bloom in midseason, they carry loads of the most brilliant color far into the fall or until touched with frost.

Our list of standard Phlox is made up of sorts we have tested for many years and have chosen the very best of the large number of older varieties that are offered for sale. This list includes a few of what we consider the most desirable of the newer varieties. Field grown plants, 25c each; 5 for \$1.00.

Africa — Brilliant carmine-red with a deep blood-red eye.

Beacon — A very profuse blooming bright cherry-red.

Count Zeppelin — A tall white with a vermilion-red eye.

Enchantress—A bright salmon-pink with a darker eye.

Jules Sandeau—A dwarf free flowering salmon-pink.

Mrs. Jenkins — A medium tall, early blooming beautiful white.

R. P. Struthers—Tall. A bright rosy carmine with claret eye.

Starlight — Violet-red, shading to lilac with white center.

Thor — Deep salmon-pink with a large red eye. Thrifty grower.

Count Zeppelin—Very large white with a deep crimson eye. The best of the calico type.

P. D. Williams — Another fine variety that we would place at the top. Enormous flowers in pyramidal trusses. Soft rose-pink, darker eye. Flowers do not cup or bleach.

Morgenrood — Large unusually striking flowers of deep rose; large florets.

Subulata (Creeping Phlox) — Blooms in May, when whole plant is a vivid mass of lavender-pink. Very hardy.

Climbing Vines

BITTERSWEET

A native climber with handsome, glossy foliage and large clusters of beautiful orange-crimson berries. **35c** and **50c** each.

CLEMATIS JACKMANNI

The most beautiful and showy Clematis with deep velvety purple flowers. Strong potted plants, ready to bloom. **65c** each; 2 for **\$1.20**.

ENGELMAN'S IVY

The only vine which clings to brick, stone or stucco. Foliage turns to brilliant red color in fall. 2 year vines, **35c**; 3 year vines, **50c**.

BOSTON IVY

Small glossy leaves and slender stems which cling closely to walls. 3 year vines, **50c**.

SCARLET TRUMPET HONEYSUCKLE

We consider this the most satisfactory climber where you want both shade and showy bloom. Brilliant yellow throated scarlet flowers nearly all summer. Strong 2-year plants, **50c** each.

GOLD FLAME HONEYSUCKLE

The ever-blooming honeysuckle. This is one of the choicest plants in our entire catalog. From June to October it is covered with hundreds of fragrant flowers, flame-scarlet outside and golden-yellow inside. Fine for porch, arbor, trellis, fence and ground cover. It is perfectly hardy, easy to grow, succeeds everywhere. Our strong No. 1 plants will bloom this summer. Each **60c**.

HARDY APRICOTS

Prof. Hansen of South Dakota introduced these hardy apricots from North China in 1924 and has been improving them since that time. Fruit is of good size and of excellent quality. The trees have stood 40° below zero. Makes excellent jam and is fine for canning. We have five varieties. 3 ft. trees **60c**; 2 for **\$1.00**.

Cherries

The hybrid Minnesota Cherry, which is a cross between a plum and cherry, has the flavor of the cherry and is hardy like the native plum, and the birds do not bother them. They are heavy yielders and are excellent for canning.

Oka — A very compact, vigorous growing tree. It is a heavy yielder, producing bright red fruits of medium size. Tree is somewhat dwarf and can be planted closer together than most fruit trees.

Sapa — A very heavy yielder. Fruit is large, red, with dark red flesh. One of Professor Hansen's most popular introductions.

Oka and **Sapa** trees, 4-5 ft., **50c** each

Rocky Mountain Cherry — A small bush cherry growing wild in the western Dakotas. In the natural state the fruit is about ½ inch in diameter. Under cultivation and selected out for the best varieties it grows larger and many of these selected varieties make a fine fruit for jams and jellies. The bushes grow to a height of 4 to 6 feet and are just black with fruit. Makes an ideal pollinizer for the **Oka** and **Sapa**.

2-3 ft., **30c** each

GRAPES

Beta — The most widely grown and probably the most profitable grape grown in the Northwest. A heavy, annual bearer, hardy as the wild grape and produces heavy crops of medium sized fruit of extra good quality for juice and jelly. 2 year vines, **20c** each; **\$2.00** per 12.

Fredonia — The new, outstanding early black Grape. **Fredonia** is the earliest good black Grape. The vine is vigorous and productive and ripens its fruit 3 weeks earlier than **Concord**. The clusters are medium in size, cylindrical and very compact; berries large, round, and hang well to the bunch; the skin is thick and tough; the flesh is juicy, solid, but tender, and the quality is very good. **Fredonia** stands alone as an early heavy fruiting black Grape. Plant **Fredonia** this year and grow your own table grapes. 2 yr. vines, **25c** each; **\$2.50** per 12.

VIGORO, the Complete Plant Food, Supplies All Plants 11 Vital Elements!

APPLES

TETOFSKY

The first apple to ripen. Tetofsky is not only an eating apple of finest quality, but is excellent for sauce and canning.

YELLOW TRANSPARENT

Ripens about August 1st. Flesh juicy, tender and of fine flavor.

DUCHESS

A vigorous growing, hardy tree and heavy bearer. Fruit is large, greenish yellow, striped with red. The standard early apple for the Northwest.

BEACON

A new variety produced at the Minnesota Fruit Breeding Farm. A deep red apple ripening a few days after the Duchess and is of better quality and keeps a month longer. It will be a valuable commercial variety because of its early annual bearing habit, uniform size, good quality and high color.

WEALTHY

The leading commercial variety for fall. In any orchard in this part of the country you will find Wealthy as the main variety. It is a great bearer, excellent for eating fresh or cooking. Fine grained and juicy. Ripens in September and is the best known and best liked of the fall varieties.

HARALSON

An early, heavy and annual bearer. The fruit hangs well to the tree until matured, is a deep red and the flesh is firm. Keeps until well into the spring. A leading market variety.

McINTOSH

Fruit above medium size, yellow covered with crimson, flesh snow white, crisp, very tender, aromatic and sub-acid. October to January.

PERKINS

Tree is a rapid, robust grower, free from blight and perfectly hardy. Fruit is large, rich red, round as a ball and hangs well to the tree. Keeps well into May.

NORTHWESTERN GREENING

Fruit very large, smooth and handsome; green turning yellow as it matures. In good demand as a cooking apple in late winter and spring.

MALINDA

One of the hardiest, heaviest bearing longest keeping apples that can be grown here. The flesh is yellowish white, firm, juicy, and with a sweet after-taste. Our four Malinda trees, 36 years old, produced sixty bushels in 1938.

WHITNEY

A large, red, mild flavored Crab, excellent for eating, canning and pickles. Perfectly hardy, never blights and is a heavy cropper.

DOLGO

The Dolgo is known as the great dual purpose crab. The trees, which seldom grow over 12 feet high, are very shapely and neat in appearance and develop into a beautiful small lawn tree. It is extremely hardy and after it has attained its growth will last for many years. In the spring it is one solid mass of large white blooms, which are followed by a great crop of crab apples. These crabs are a brilliant red about an inch in diameter and an inch and a half long. The fruit is so brilliant in color and so abundant on the tree that it makes a wonderful ornamental sight. The fruit makes up into a jelly of the finest flavor and a beautiful red color. This crab is not grown for its ornamental qualities alone but it is grown commercially for the fruit which readily sells at a big price.

PRAIRIE SPY (Minn. No. 1007)

This is the new apple which apple lovers in the North have been looking for these many years. Prairie Spy is a big red apple with some green on it. An apple of the finest quality that will keep through the winter in an ordinary cellar. The tree is hardy here, a heavy bearer, and should be included in every home orchard and is undoubtedly one of the best varieties for the commercial orchard.

Prices of all apple trees

	each	5	10
4-5 ft. -----	\$.60	\$ 2.75	\$ 5.00
5-7 ft. -----	.70	3.25	6.00

JUMBO PLUMS

BIG AS CALIFORNIA PLUMS

Taste Better

The choice list of Jumbo Plums described below are considered the cream of the list. Our recommendation is to plant the full assortment as each one has a different season—each a different flavor. You will find them all excellent. A Pollinizer Plum should be included in every group.

Superior — One of the very best. This sensational new Plum was originated at the Minnesota Fruit Breeding Farm and is considered the most perfect Plum of all fine Plums introduced by the station. Fruit very large, firm flesh, beautiful red color, and delicious quality. You can peel them as you would a Peach.

Underwood—The Underwood is valuable because of its large, early fruit and annual bearing. It is the earliest of the large Plums, attaining a size of 1¾ inches in diameter. The tree is a vigorous grower, the limbs being strong and well distributed and able to carry great loads of fruit. Plums, attractive red with splendid quality, small pit hang well to the tree, ripening over a long period, August 1st to 15th, enabling three pickings to be made. The Underwood is an annual bearer. These features appeal alike to the commercial grower and to the home orchardist.

Monitor — Monitor is one of the market Plums we have been looking for here in the Northwest. It has high quality, firm flesh and a large size—some being more than 1¾ inches in diameter. It is very productive and a regular bearer. Season, late August.

Ember — The new Plum originated at the Minnesota Fruit Breeding Farm about which there have been so many fine reports. Prof. W. H. Alderman, Chief Division of Horticulture, says, "Ember is a late Plum of good size and has exceptionally fine dessert and canning qualities. It is yellow with attractive red blush. It has two valuable and outstanding characteristics; it hangs to the tree tenaciously even at full maturity, and after picking will keep in good condition for two or three weeks."

POLLINIZER PLUMS

Pollinizer Plums are essential for success in raising Plums. Be sure to include some Surprise Plums in every group of Jumbo Plums. If you now have a group of Plums not fruiting well, you should add some Surprise Plums to the group this spring.

PRICES OF PLUMS

	each	3	10
4-5 ft. -----	\$.50	\$ 1.25	\$ 4.00
5-7 ft. -----	.60	1.50	4.75

PLUM SPECIAL

1 Superior.....	} All 4-5 ft.	ONLY \$1.60
1 Ember.....		
1 Underwood.....		
1 Surprise.....		

NEW HARDY PEARS

Patten — A strong vigorous grower, apparently free from blight. The fruit is good size, very tender, juicy and of good quality. Ripens in September.

Parker — Originated at Minnesota Fruit Breeding Farm and is considered finest quality of all. It is large size, golden yellow, ripens in late August.

Minnesota No. 3 — This is a small pear but it is so hardy, has borne so well and is of such high quality it is attracting a good deal of attention. Is excellent to eat out of hand or to can. Large pear trees, 5-7 ft., 80c each, three for \$2.25.

RASPBERRIES

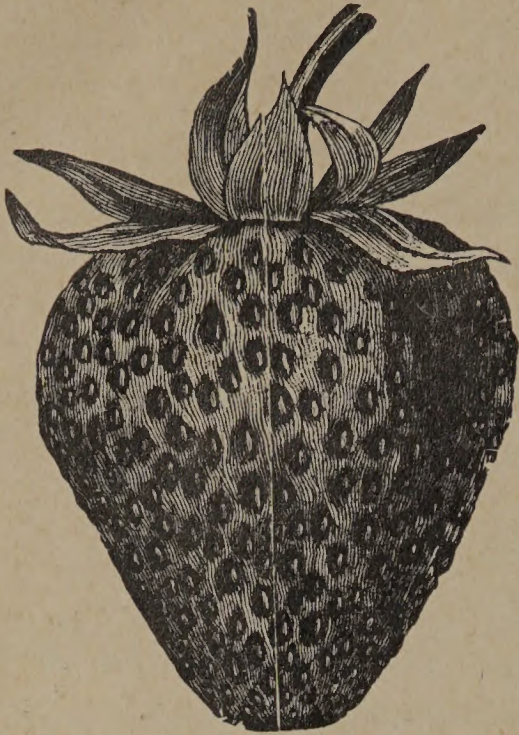
Latham — The most popular red raspberry all over the Northwest, both for home use and market.

Chief — Selected for its earliness and superior quality. Very hardy, resistant to disease and ten days earlier than the Latham.

Latham and Chief plants, No. 1 grade, 12 for 60c; 25 for \$1.00; 50 for \$1.75; 100 for \$3.00.

Newburgh—This is the most promising of the new varieties. Fruit is very large and size holds up well throughout a long picking season. Plants are vigorous but do not grow as tall as other sorts. Seems to be immune to mosaic disease.

No. 1 plants, 70c per 12; \$1.20 per 25; \$4.00 per 100.



STRAWBERRIES

Prices of Cutting's Certified Strawberry Plants

	100	200	500	1000
Sen. Dunlap	\$0.75	\$1.50	\$3.00	\$5.00
Premier	1.00	1.75	3.50	6.00
Warfield	1.00	1.75	3.50	6.00
Beaver	1.00	1.75	3.50	6.00
Gem Everbrg	1.80	3.00		
Mastodon	2.00	3.50		

Wayzata, 25 plants, \$1.00; 50 plants, \$1.75;
100 plants, \$3.00

GOOSEBERRIES

Carrie—This is the standard variety in Minnesota; is good size, very productive and easy to pick. You need a few gooseberry bushes for sauce, pies and conserve. 2 year plants, 25c; 6 for \$1.25.

Pixwell — This is the new Gooseberry originated by Dr. A. F. Yeager, at the North Dakota Experiment Station. As the name implies it "picks well." The berries hang down on slender stems about two inches below the branches. This feature together with the fewness and relative softness of its thorns makes picking the fruit a quick and easy operation. Pixwell is absolutely hardy and a good vigorous grower producing large bushes that carry heavy loads of fruit. The berries are large, oval, an attractive light green color when immature, ripening to pink. Plant some of these dependable bushes this year. 50c each; three for \$1.25.

CURRANTS

Diploma—Bush vigorous, upright; fruit medium to large; sprightly acid flavor; very productive; 2 yr. plants. 25c each, 6 for \$1.25.

Red Lake—The berries are big and the bunches long and well filled to the tip. The exceptionally long stems make them easy to pick. The bushes are thrifty and extremely productive. 2 yr. plants, 35c each; 3 for \$1.00.

FERTILIZERS



Your Lawn Needs Food!

That beautiful thick lawn you admire is made up of millions of tiny, individual grass plants. They're living things that require 11 food elements from the soil for beautiful, thriving growth.

VIGORO
Square Meal for all Plants

A Product of Swift

100 lb. bag \$4.00 50 lb. bag \$2.50
25 lb. bag \$1.50

GRAS-GROER, 8-8-6

A fertilizer prepared especially for lawns by the Minnesota Farm Bureau Service Co. and contains more nitrogen than most brands. Grass needs more nitrogen for quick top growth. 25 lbs. for 90c; 100 lbs. for \$3.00.

Special Garden Fertilizer, 8-12-6
25 lbs. for \$1.00; 100 lbs. for \$3.25

Flower and Vegetable Plants

GROWN FOR YOU IN OUR GREENHOUSE

If you want to secure quick results with tomato, petunia or salvia plants, it will pay you to buy our strong, sturdy potted plants. The plants grown in flats have all been transplanted and given plenty of room so they should make a rapid growth in your garden.

POTTED PLANTS

For Window Boxes and
Flower Beds

	Each	12
Cannas	\$.20	\$2.00
Dracenas40
Fuchsia10 to .30
Geraniums, 4 in30	3.00
Marguerite Daisy20	2.00
Lantana15 to .35
Petunias	10 and .15
Salvias10	1.00
Vincas20	2.00

FLOWERING PLANTS

Transplanted—grown in flats.

	12		12
Ageratum	\$.35	Snapdragons	\$.25
Asters35	Salvias35
Alyssum25	Zinnias15
Calendula25	Pansies, large plants	
Petunia35	in bloom45

VEGETABLE PLANTS

Transplanted and grown with plenty
of room to assure strong plants.

	12	100
Early Cabbage—Golden Acre.....	\$.15	\$.75
Late Cabbage—		
Premium Flat Dutch10	.60
Cauliflower—Super Snowball20	1.25
Celery—Golden Self Blanching20	1.25
Egg Plant—Black Beauty25
Ground Cherry20
Pepper—Bullnose, Ruby King..	.25	1.75
Tomatoes—Earliana, Break o'		
Day, Bison, John Baer, Mar-		
globe, Ponderosa20	1.25
Tomatoes—		
Potted Plants —	\$.50 to \$1.00 per 12	

Potted Plants in bloom for Mother's Day
and Decoration Day

If you want plants sent by parcel post add ten cents to your order regardless of the size of the order.

Mary Washington Asparagus

Asparagus is a delicacy that comes early from the vegetable garden. Like all early vegetables it costs quite a good deal when bought at the store; and yet a bed of asparagus in your own garden will keep your table supplied and will last for many years.

	12	25	50	100
One year roots.....	\$.30	\$.50	\$.75	\$1.25
Two year roots.....	.50	.75	1.00	1.75

The New Rhubarb

We have been growing these new varieties where we could compare them with the old kinds and the **McDonald** and **Ruby** are so much superior that we are not going to offer any of the old varieties for sale. The old varieties were grown from seed while the **McDonald** and **Ruby** will always have to be propagated by divisions which will make them cost more but they are well worth the difference.

McDONALD—A new and select strain of Rhubarb or Pieplant developed and sent out from the Experimental Station of the Dominion of Canada. McDonald is unusually high in sugar content for a Rhubarb which causes a great saving in sugar in its cooking. It is also an unusually fine flavored Rhubarb which makes it very desirable. Usable over a long period of time. Makes a fine pink sauce of finest flavor. Strong roots—40c each; 3 for \$1.00.

RUBY—Another fine Rhubarb from the Canadian Station. Ruby, like McDonald, is very high in sugar content, and is of exceptionally fine flavor but differs from that variety in color. McDonald is a green stemmed sort with a good deal of red veining running through it while Ruby is a deep rich ruby red, the reddest of all Rhubarb. It makes a deep rich red sauce which is very beautiful and tasty. Strong roots—40c each; 3 for \$1.00

THE LAWN

For a good lawn the subsoil should be of a retentive nature that will retain moisture and will furnish plant food for the shrubs and trees. This should be covered with about four inches of good rich black dirt which should be firmed by thorough raking or rolling. A new lawn should always be rolled the following spring to "smooth out the wrinkles" caused by the freezing and thawing of the winter.

Lawn Grass Seed should be sowed at the rate of one pound to 250 square feet. After the seed is carefully sown it should be thoroughly raked in.

CUTTING'S

RELIABLE LAWN GRASS SEED

The basis of this mixture is a large percent of fancy Kentucky Blue Grass, which is combined with other suitable grasses, including White Dutch Clover, in the proper proportion to produce a fine permanent lawn. A majority of the best lawns in Rochester were planted with Cutting's Reliable seed and we are sure you cannot buy a better lawn seed, even if you pay more.

1 lb. 35c; 5 lbs. \$1.60; 10 lbs. \$3.00;
25 lbs. \$7.00

ECONOMY LAWN GRASS SEED

This is a well-balanced mixture for those who want a good low priced seed. Does not contain as high a percentage of the higher priced varieties as Cutting's Reliable Brand, but you cannot get a better seed anywhere for the price. Will grow quickly and form a permanent lawn. Lb. 25c; 10 lbs. \$2.25; 25 lbs, \$5.00

And now you are ready for one of the most important parts of getting a new lawn started—giving it plenty of water. It should be thoroughly soaked every evening until it is well up; then it will not need so much water unless it should be hot and windy. Begin mowing when the grass is from 2 to 3 inches high.

All grass seed sold by reliable firms is carefully tested and if your lawn is not a complete success, don't blame the seed until you have found out if the trouble cannot be traced to one of these causes: not enough regular watering; a poor soil, or a soil full of weed seeds which choked out the grass seed.

SHADY PLACE MIXTURE

This is a special mixture of the varieties of grass seed that do well in the shade. By planting this seed, then using fertilizer and water to replace that removed by the trees you can grow a good lawn in the shade. Lb. 55c; 10 lbs. \$5.00.

BERRY BOXES AND CRATES

The Ewald Folding Berry Box is the most convenient box to use as they require only a little space for storing and are quickly set up when you want to use them. We have bought a large quantity of these boxes and can fill all orders this season.

125 qt. boxes, packed in one 16	
qt. crate	\$1.25
500 qt. boxes, packed in four 16	
qt. crates	4.50
1000 qt. boxes, packed in eight 16	
qt. crates	8.50
200 pt. boxes, packed in one 16	
qt. crate	1.90
1000 pt. boxes, packed in five 16	
qt. crates	7.50

F. O. B. Byron

Ask for prices on larger quantities.

WE ARE INVITING YOU to come to our nursery this spring where you can get the best stock it is possible to grow and at a price you can afford to pay.

... refused to bloom before, practi-
... nation of root-shock in trans-
... houseplants, trees and shrubs.
... t drops of zoom to a gallon of
... A two ounce bottle, enough to
... 250 gallons, for \$1.00, postpaid.

U. S. DEPARTMENT OF AGRICULTURE,

WASHINGTON, D. C.

